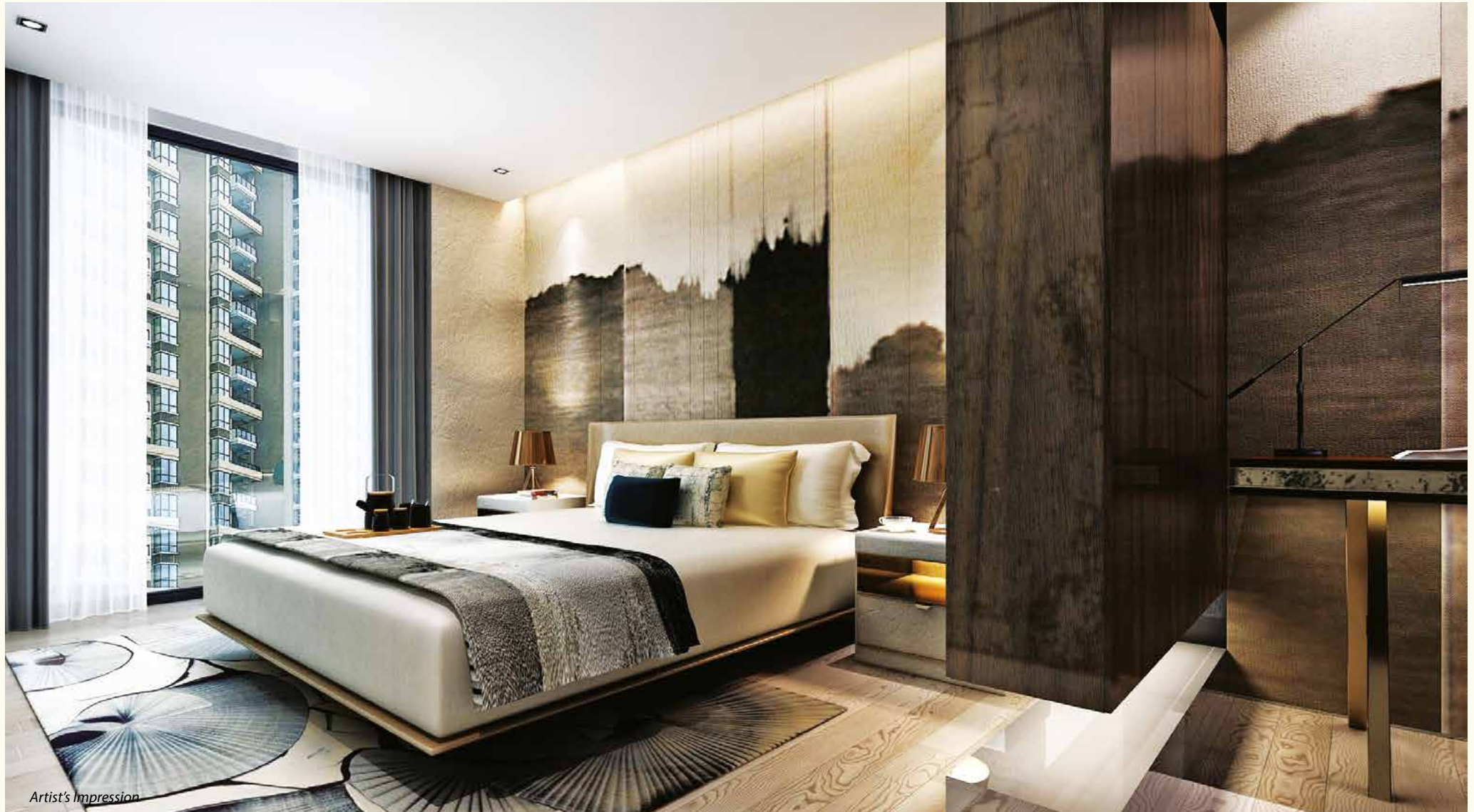


## 2-Bedroom Units on the Penthouse Floor

49/F



Artist's Impression

# Mandani Bay QUAY TOWER 2

## PENTHOUSE FLOOR 49/F

CITY / AMENITIES VIEW



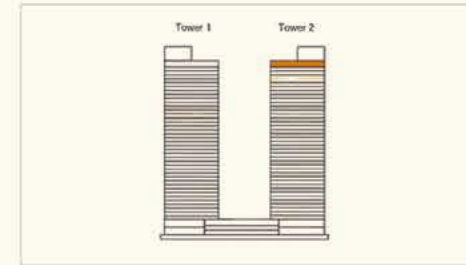
SEA / GREEN PROMENADE VIEW



For Identification Purposes Only



BLOCK PLAN



KEY ELEVATION

### LEGEND

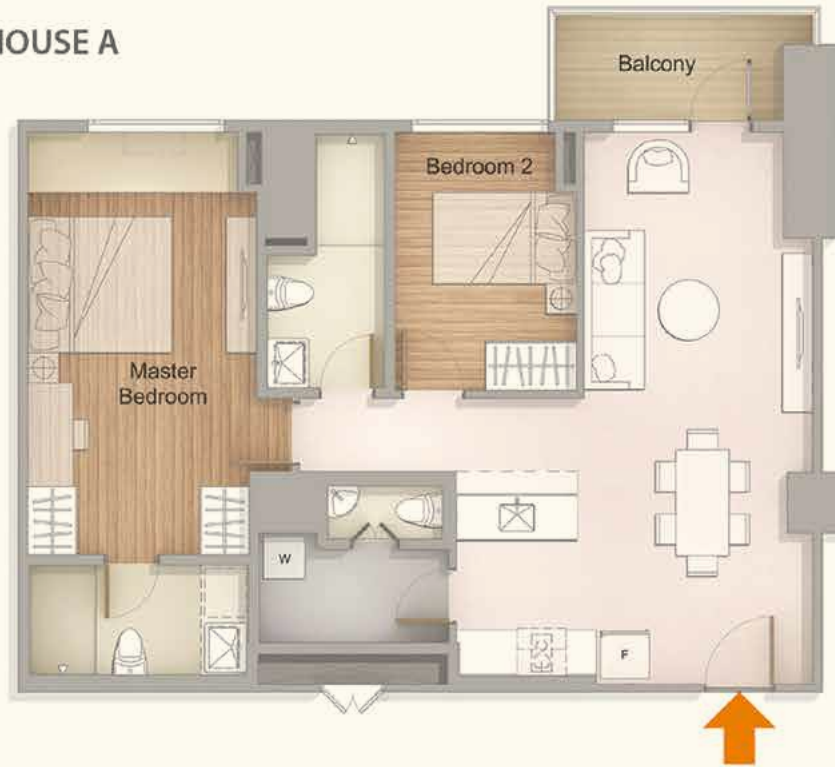
#### TYPICAL UNIT TYPE

- 1-BEDROOM
- 2-BEDROOM DELUXE
- 2-BEDROOM SUPERIOR
- 2-BEDROOM SUITE
- 3-BEDROOM
- COMMON AREAS

While the particulars, details and visuals shown in this publication are based on present plans, potential buyers must verify, check and confirm, and are expected to have verified, checked and confirmed, the actual, complete and final particulars, details and specifications before any acquisition. The contents of this publication do not amount or constitute any offer or contract, or part of any offer or contract, and are not intended to create any relationship, whether in contract or otherwise, with any potential buyer. The information contained in this publication is for general reference purpose only and is subject to change without prior notice. The dimensions shown herein are also subject to change depending on actual condition and circumstances at site during construction.

# Mandani Bay QUAY TOWER 2

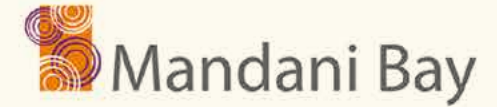
49/F  
2-BEDROOM PENTHOUSE A



Approx. Area (sqm)	*2BR A (PH)
Unit Area	78.75
Balcony Area	5.51
<b>TOTAL AREA</b>	<b>84.26</b>



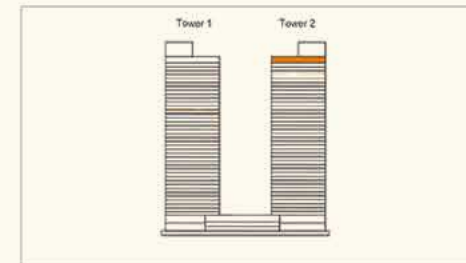
For Identification Purposes Only



BLOCK PLAN



KEY PLAN



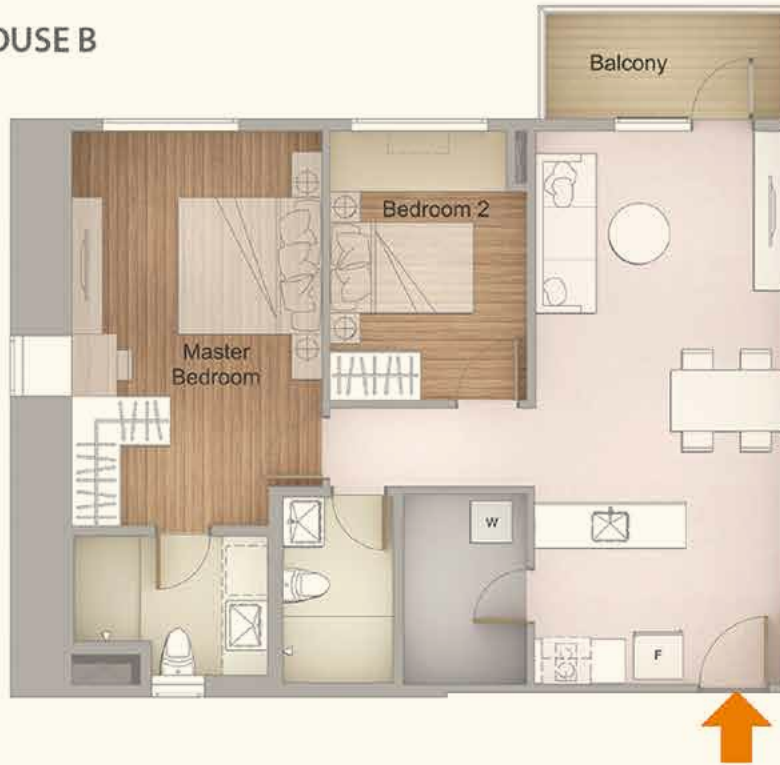
KEY ELEVATION

While the particulars, details and visuals shown in this publication are based on present plans, potential buyers must verify, check and confirm, and are expected to have verified, checked and confirmed, the actual, complete and final particulars, details and specifications before any acquisition. The contents of this publication do not amount or constitute any offer or contract, or part of any offer or contract, and are not intended to create any relationship, whether in contract or otherwise, with any potential buyer. The information contained in this publication is for general reference purpose only and is subject to change without prior notice. The dimensions shown herein are also subject to change depending on actual condition and circumstances at site during construction.

# Mandani Bay

QUAY  
TOWER 2

49/F  
2-BEDROOM PENTHOUSE B



Approx. Area (sqm)	*2BR B (PH)
Unit Area	71.74
Balcony Area	5.02
<b>TOTAL AREA</b>	<b>76.76</b>



For Identification Purposes Only

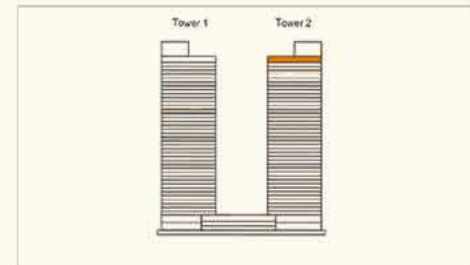
# Mandani Bay



BLOCK PLAN



KEY PLAN



KEY ELEVATION

While the particulars, details and visuals shown in this publication are based on present plans, potential buyers must verify, check and confirm, and are expected to have verified, checked and confirmed, the actual, complete and final particulars, details and specifications before any acquisition. The contents of this publication do not amount or constitute any offer or contract, or part of any offer or contract, and are not intended to create any relationship, whether in contract or otherwise, with any potential buyer. The information contained in this publication is for general reference purpose only and is subject to change without prior notice. The dimensions shown herein are also subject to change depending on actual condition and circumstances at site during construction.

# Mandani Bay QUAY TOWER 2

49/F  
2-BEDROOM PENTHOUSE C



Approx. Area (sqm)	*2BR C (PH)
Unit Area	77.28
Balcony Area	4.50
<b>TOTAL AREA</b>	<b>81.78</b>



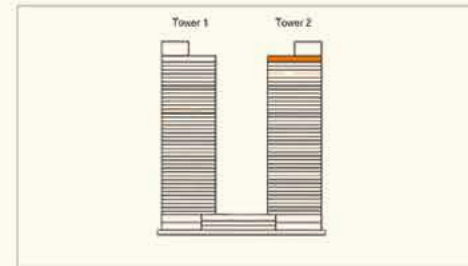
For Identification Purposes Only



BLOCK PLAN



KEY PLAN



KEY ELEVATION

While the particulars, details and visuals shown in this publication are based on present plans, potential buyers must verify, check and confirm, and are expected to have verified, checked and confirmed, the actual, complete and final particulars, details and specifications before any acquisition. The contents of this publication do not amount or constitute any offer or contract, or part of any offer or contract, and are not intended to create any relationship, whether in contract or otherwise, with any potential buyer. The information contained in this publication is for general reference purpose only and is subject to change without prior notice. The dimensions shown herein are also subject to change depending on actual condition and circumstances at site during construction.

# Mandani Bay QUAY

Artist's Impression

 Mandani Bay

Developed by HTLand Inc., a joint venture of

 Hongkong Land

**TAFT**  
PROPERTIES

[www.mandanibay.com](http://www.mandanibay.com) • [info@mandanibay.com.ph](mailto:info@mandanibay.com.ph) • +63 32 2626 888

Project Location: F.E. Zuellig Avenue, Mandaue City, Cebu

Mandani Bay Suites HLURB LS Nos. 031135 (Tower 1) & 031136 (Tower 2) • Completion Date: March 31, 2020

Mandani Bay Quay HLURB TLTS No. 0083 (Tower 1) • Completion Date: December 2021

Mandani Bay Quay HLURB LS No. 033645 (Tower 2) • Completion Date: December 31, 2022