

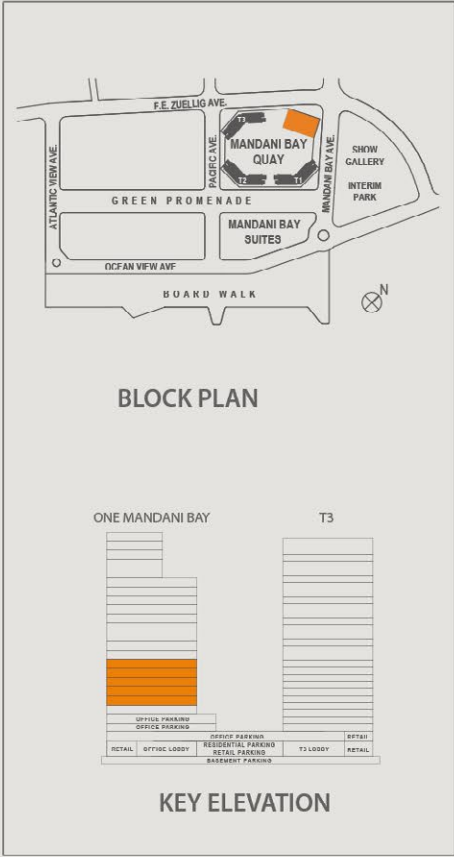
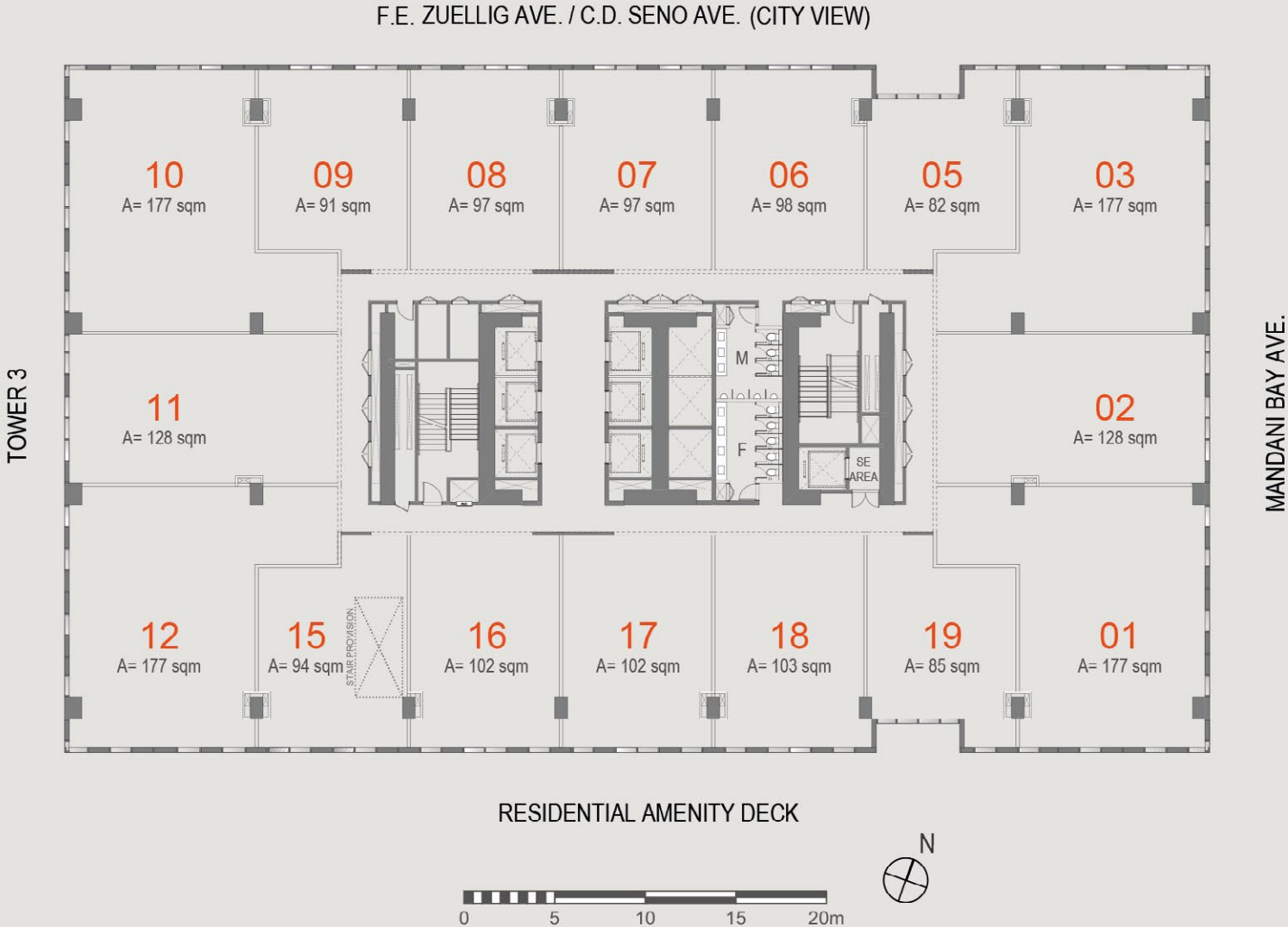
One Mandani Bay

Office Unit Type 1
Floor Plan



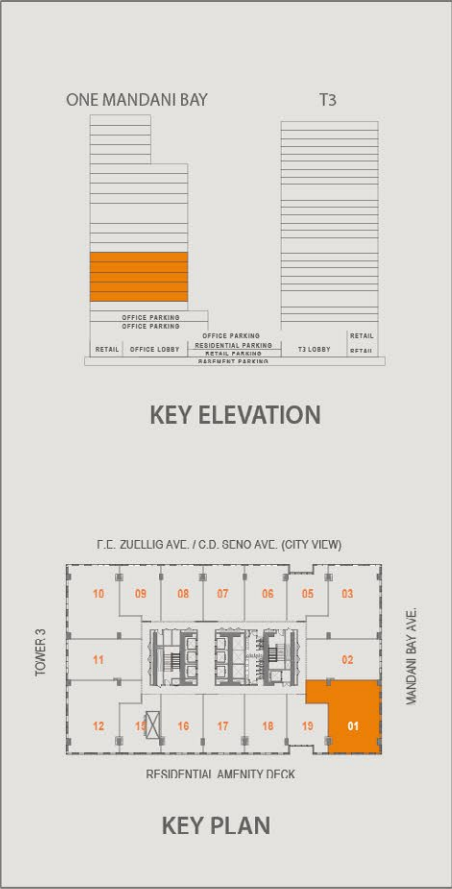
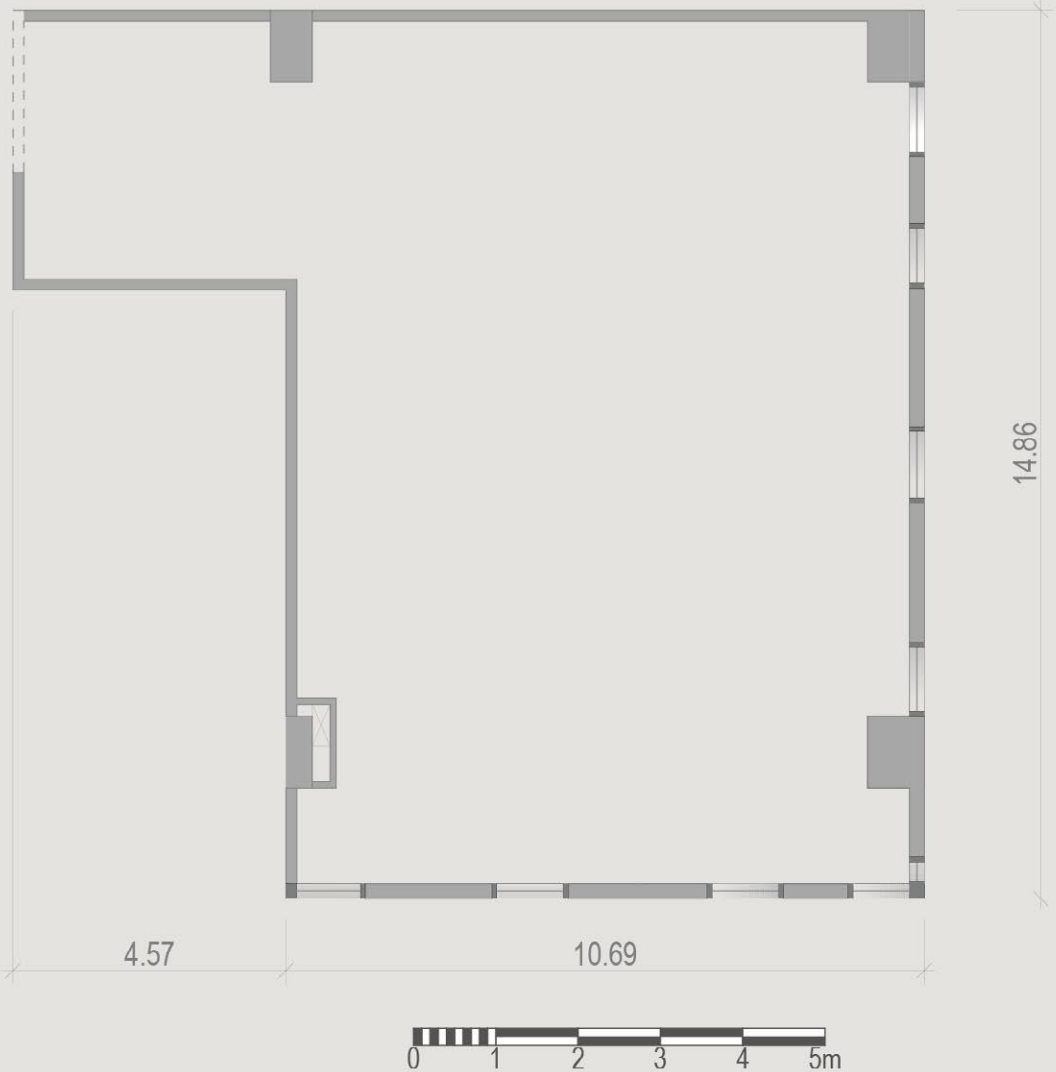
One Mandani Bay

Typical Floor Plan



One Mandani Bay

Unit Type 1 • 8th-12th Floor
Unit Area: Approximately 177 sq. m.





Artist's Impression



Developed by HTLand Inc., a joint venture of



www.mandanibay.com • info@mandanibay.com.ph • +63 32 2626 888

Project Location: F.E. Zuellig Avenue, Mandaue City, Cebu

HLURB LTS No.: 034480

Project Completion Date: June 2023