

## Studio & Studio Plus Units\* on the Standard Floor

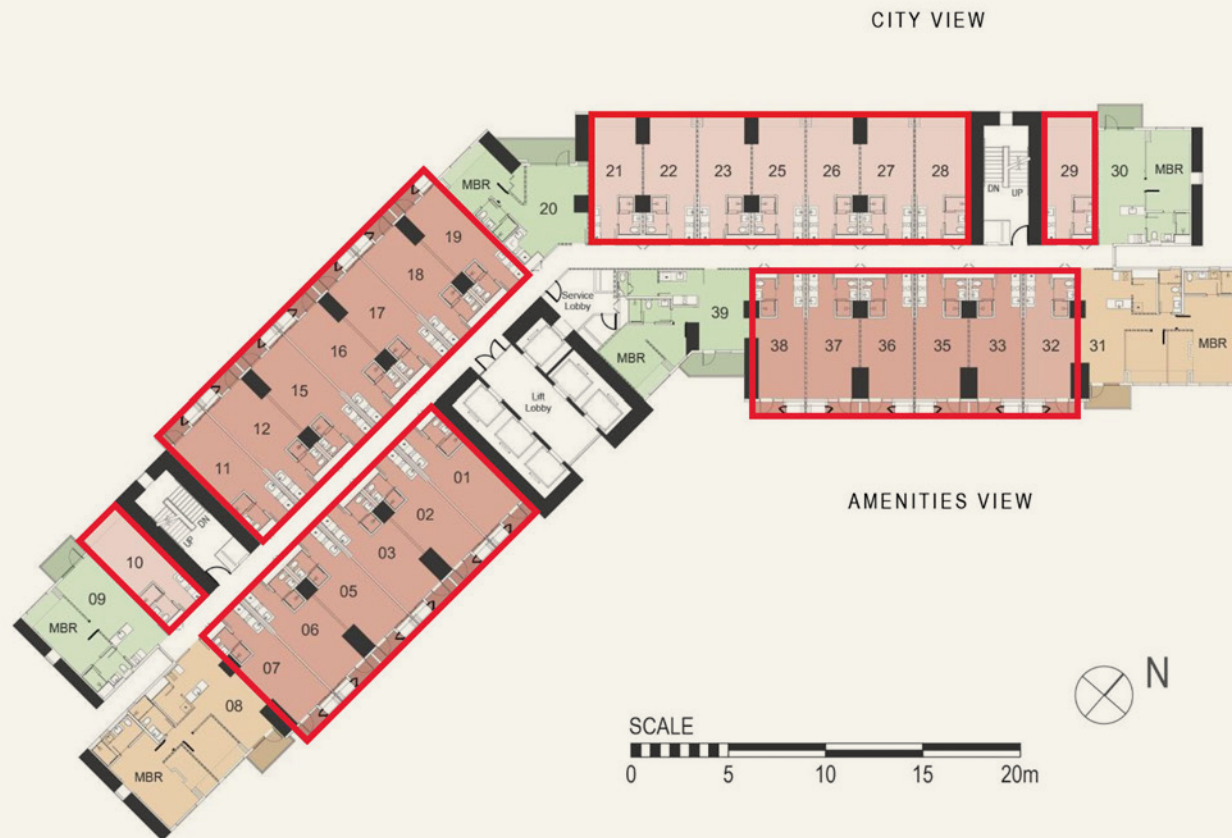
\*Fully furnished  
6F-33F



# Mandani Bay

QUAY  
TOWER 3

## STANDARD FLOOR 6F-33F



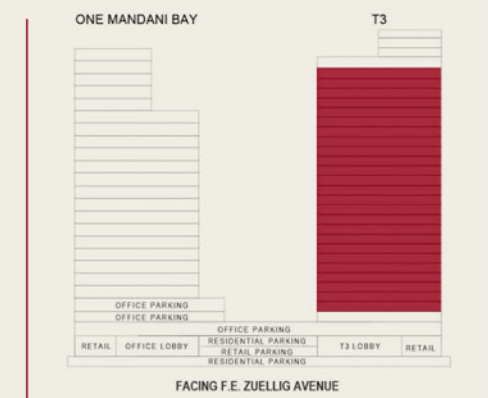
For Identification Purposes Only

# Mandani Bay

## BLOCK PLAN



## KEY ELEVATION



## LEGEND

### TYPICAL UNIT TYPE

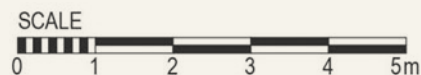
- ☐ STUDIO
- ☐ STUDIO PLUS
- ☐ 1-BEDROOM
- ☐ 2-BEDROOM SUITE
- ☐ COMMON AREAS

While the particulars, details and visuals shown in this publication are based on present plans, potential buyers must verify, check and confirm, and are expected to have verified, checked and confirmed, the actual, complete and final particulars, details and specifications before any acquisition. The contents of this publication do not amount or constitute any offer or contract, or part of any offer or contract, and are not intended to create any relationship, whether in contract or otherwise, with any potential buyer. The information contained in this publication is for general reference purpose only and is subject to change without prior notice. The dimensions shown herein are also subject to change depending on actual conditions and circumstances at the site during construction.

# Mandani Bay

QUAY  
TOWER 3

Studio  
6F-33F



Approx. Area (sqm)	*Studio
Unit Area	29.75
Balcony Area	-
<b>TOTAL AREA</b>	<b>29.75</b>

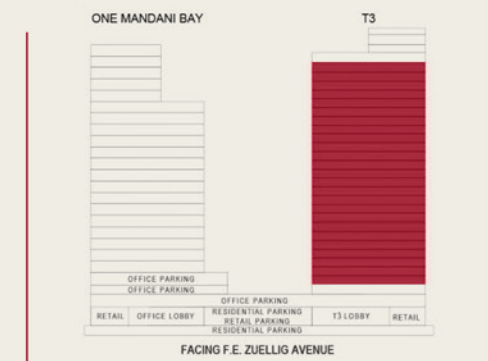
For Identification Purposes Only

## Mandani Bay

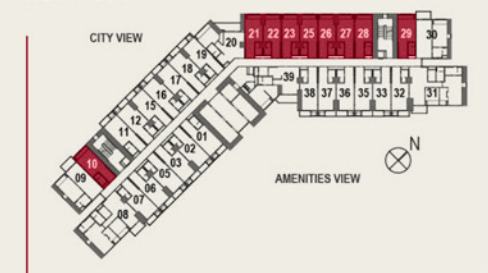
### BLOCK PLAN



### KEY ELEVATION



### KEY PLAN



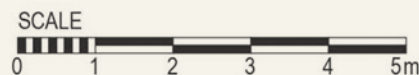
While the particulars, details and visuals shown in this publication are based on present plans, potential buyers must verify, check and confirm, and are expected to have verified, checked and confirmed, the actual, complete and final particulars, details and specifications before any acquisition. The contents of this publication do not amount or constitute any offer or contract, or part of any offer or contract, and are not intended to create any relationship, whether in contract or otherwise, with any potential buyer. The information contained in this publication is for general reference purpose only and is subject to change without prior notice. The dimensions shown herein are also subject to change depending on actual conditions and circumstances at the site during construction.



# Mandani Bay

QUAY  
TOWER 3

Studio Plus  
6F-33F



Approx. Area (sqm)	*Studio w/ Balcony
Unit Area	31.09
Balcony Area	2.19
<b>TOTAL AREA</b>	<b>33.28</b>

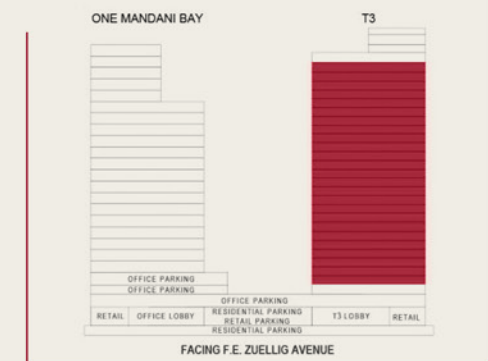
For Identification Purposes Only

## Mandani Bay

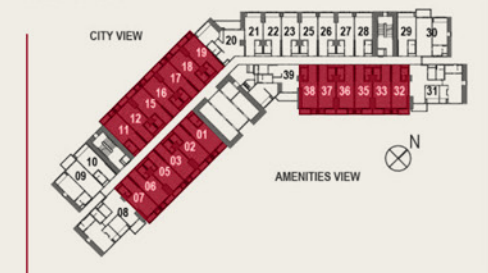
### BLOCK PLAN



### KEY ELEVATION



### KEY PLAN



While the particulars, details and visuals shown in this publication are based on present plans, potential buyers must verify, check and confirm, and are expected to have verified, checked and confirmed, the actual, complete and final particulars, details and specifications before any acquisition. The contents of this publication do not amount or constitute any offer or contract, or part of any offer or contract, and are not intended to create any relationship, whether in contract or otherwise, with any potential buyer. The information contained in this publication is for general reference purpose only and is subject to change without prior notice. The dimensions shown herein are also subject to change depending on actual conditions and circumstances at the site during construction.

# Mandani Bay QUAY

Artist's Impression



Developed by HTLand Inc., a joint venture of



[www.mandanibay.com](http://www.mandanibay.com) • [info@mandanibay.com.ph](mailto:info@mandanibay.com.ph) • +63 32 2626 888

Project Location: F.E. Zuellig Avenue, Mandaue City, Cebu

Mandani Bay Quay HLURB LTS No. 034539 (Tower 3) • Completion Date: April 30, 2023